



## ISN ConneXsys Operator Work Station

### SPECIFICATIONS

Supersedes 450.24-S9 (704)

Form 450.24-S9 (904)

The ISN ConneXsys Operating Work Station provides a graphical interface to YORK's BACnet control system. The ISN ConneXsys OWS provides powerful monitoring and control capabilities throughout the BACnet internetwork, including third-party devices.

As a native BACnet device, the ISN ConneXsys OWS provides access to the standard and proprietary BACnet Objects, Properties, and Services used in YORK devices and standard Objects used in third-party devices.

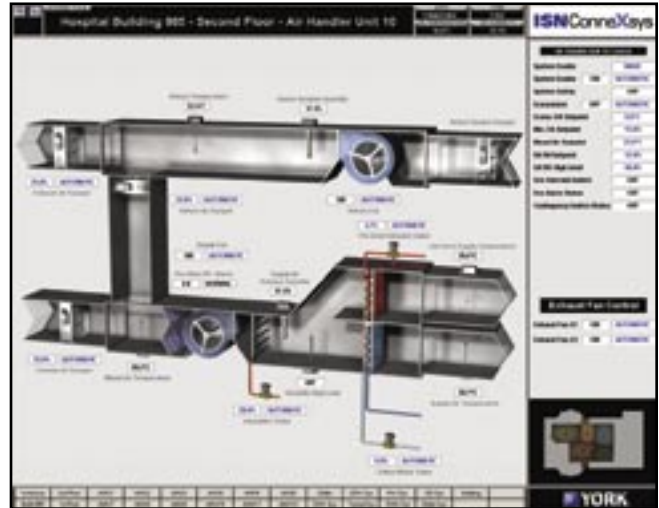
A jobsite-specific graphic provides an overview of the system. Within the graphics are links to specific in-



formation for each network or device with data points bound to the graphic. Additional links can be created on each graphic to provide the user access to other information on the network.

Navigator provides an object-oriented navigation method with access to devices using standard BACnet terms. To assist in "visualizing" the network structure, YORK controllers can be configured to appear under the appropriate CX-Router in a tree structure. This greatly enhances the ability to locate a device when troubleshooting.

The optional Analyst module provides customizable trending capability in a graphical format, i.e., charts and graphs. In addition, individual points can be viewed in a list format.



The Illustrator option provides the ability to create graphics and add points. An extensive library of YORK and common HVAC devices are accessed by simply dragging them from the toolbar onto the graphic. Illustrator allows importation of jpg, tif, bmp, and gif formatted graphics from outside sources and wav clips can be added in the same way to provide a full multimedia experience.

The ISN ConneXsys OWS provides a simple method for initial configuration. BACnet devices are Auto Discovered, eliminating the need to manually enter Device Object Properties. Graphics are automatically loaded based on the controller name (YORK devices only).

### Features and Benefits

- Communicates using ASHRAE's BACnet protocol for interoperability with YORK's ISN ConneXsys and third-party control systems.
- Supports BACnet/IP, Ethernet, MS/TP, and PTP data layers.
- Auto Discover locates devices throughout the internetwork.
- Industry-leading HVAC graphics library included.

---

**Minimum System Requirements**

Operating Systems	Microsoft® Windows® 2000 or XP
Processor	1 GHz Pentium or Athlon
RAM	128 MB
Hard Disk	5 GB
Video	16-bit color, 1024 x 768
Hardware Key	USB

---

**Ordering Information**

ISN ConneXsys OWS	031-02511-100
ISN ConneXsys OWS with Small Analyst	031-02511-101
ISN ConneXsys OWS with Medium Analyst	031-02511-102
ISN ConneXsys OWS with Illustrator	031-02511-110
ISN ConneXsys OWS with Illustrator and Small Analyst	031-02511-111
ISN ConneXsys OWS with Illustrator and Medium Analyst	031-02511-112
Large Analyst Module– Requires standalone PC and OWS	031-02512-003 (unlimited points)

