

Priva introduces Top Control 6.0

The latest version of Top Control "Priva Top Control 6.0" offers a greater openness and independence, so that end users can decide to carry out the installation according to their own wishes and needs. With the introduction of Top Control 6.0 Priva has added a number of important new features to the software. The new design shows the synergy between Priva Building Intelligence and Priva Agro is now a reality.

A major expansion within Priva Top Control 6.0 is the support of the new Graphics Touchscreen, which was received very well at the VSK and Light & Building by building managers and system houses. In addition, Priva offers openness and independence by adding the TC BACnet router, which makes new as well as current installations completely BACnet compatible. Other innovations, for example, concern the support of XML within TC ServeCenter, version management of the project database, protection of projects with a password and support of Windows system rights.



The art of having control

Graphics Touchscreen Control

With the new Graphics Touchscreen Control Priva meets the needs regarding “state-of-the-art” controls which makes it easy for users to adjust the building management system and the comfort within the building in an optimal way.

For its various users Priva offers Touchscreens that can be geared towards applications in a completely flexible way with Top Control 6.0. The Comset HX Touchscreen is available for simple adjustment of the comfort in an office as well as controlling all other building parameters.

For maintenance staff and end users the Touchscreen’s ease of control makes it simple to set the comfort of a building management system.

Comset HX Touchscreen

With the new Comset HX users in offices can easily adjust a large number of comfort variables, such as light, temperature and sun protection. In addition, the Touchscreen also offers a graphics representation of the different variables.

The Comset HX can be used very well, for example, by a receptionist, a caretaker or a doorkeeper. Moreover, because of its taut design, the Comset HX is also very representative and can be used in, for example, the conference room, meeting hall or boardroom.

The Comset HX can be connected to new and current Compri HX controllers, providing they include a Top Control version 6.0 or higher.



Intuitive control

The Comset HX is equipped with a high resolution touch screen (320x240) and offers a detailed picture. The menu of the Comset HX has been built up in such a way that the settings can be entered with the fingers and control is possible with the supplied stylus pen. The well-arranged menu structure and Help texts provide an intuitive and user-friendly control. The audible click when touching the screen additionally increases the ease of operation.

Perfectly matched

The Comset HX is applied in combination with Compri HX controllers and can be assembled and used everywhere in the building. It is possible to connect at most 8 Comset Touchscreens on one Compri HX, each with their own menu. In the menus it is possible to use variables from different controllers (Compri HX, Comforte CX or Compri TC) such as: settings, measurements and controls. These settings and measurements are always up-to-date: changes in value by the Compri or other sources are directly visible. Apart from showing an alarm overview, the alarms are also handled by the Comset HX.

In addition, each Comset HX has three LED’s and a buzzer. During the configuration they get an optional function, for example high-urgent and low-urgent failure reports. When setting the function, the chosen function is clarified by the explanatory text on the Touchscreen. With the Comset HX other switches and monitoring systems will become superfluous in various offices.

Compri HX Touchscreen

The Compri HX Touchscreen is the new installation operation for setting the Compri HX. It is not necessary anymore to have a PC or laptop for high level operate of an installation. It is possible to quickly change set-points or view values in the building management system with the new Compri HX control in a convenient and easy way.

Installation and user manual

Regular users of Priva systems are familiar with the fact that the installation operation is generated automatically by the Priva Top Control software. With the new Touchscreen the installation operation is also generated automatically. With the installation operation all variables can be viewed and set from Compri HX controllers. Apart from this installation operation, the Touchscreen also offers the opportunity to compose a user menu. With TC Select this happens in the same way as with the Comset HX, and fully according to the wishes of the user. The user menu can contain 100 variables in 6 menu levels. The Touchscreen control works with user management, so that it is determined which powers the user in question has with regard to the installation after the user has logged in on the controller.

Well-arranged

With the Compri HX Touchscreen the connected building management system is fully controlled. Hence, all controllers connected via the network can be viewed and adjusted from the Touchscreen. It goes without saying that the user menu has an unprecedented ease of operation for all controllers.



Many innovating options

The new Compri HX Touchscreen is available in two models: as a control on the Compri HX or as a panel assembly. Both models have a display in colour or monochrome with a resolution of 320x240. The audible click when touching the screen additionally increases the ease of operation.

It is possible to connect two Compri HX Touchscreens to one controller, irrespective of the model. For example, one Touchscreen can be mounted on the door of the switch cupboard, while the other Touchscreen can be placed as a control on the Compri HX. The advantage of the panel assembly is that the cupboard does not have to be opened in order to operate the controllers. Due to the present LED's and buzzer in the same housing, extra equipment such as signal lamps and switches on the switch cupboard do not have to be used. The panel assembly is easy to assemble and has a great degree of protection (IP64).

Compatible

The Compri HX Touchscreen can be connected to new and current Compri HX controllers, provided they have a Top Control version 6.0 or higher. Controllers that have older Top Control versions can also be operated with the Touchscreen if a Compri HX with TC 6.0 is included in the same network. Finally, it is also possible to operate controllers of previous generations (Compri TC) with the Touchscreen through the same Compri HX. For example, Priva ensures that current systems remain up-to-date for a long time.

Customised Touchscreen with TC Select 6.0

The Touchscreen user menu can be configured completely according to the wishes of the building manager. For this purpose the control modules to be adjusted in the software of the Priva engineering application TC Select are available.

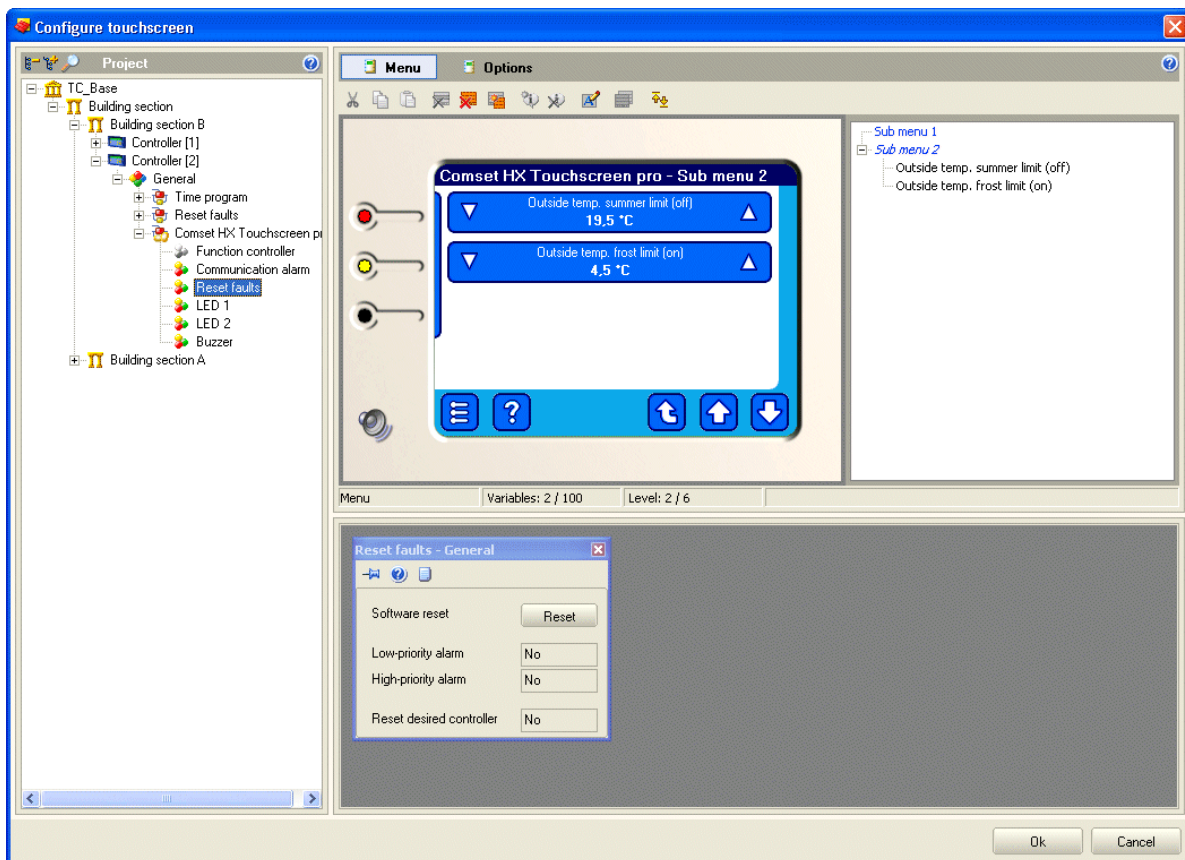
For the Comset HX two software models are available:

1. Comset HX module
2. Comset HX module Pro

The Comset HX module contains the user control whereby at most 20 variables can be placed in at most 2 menu levels (main menu and submenu). The Comset HX module Pro contains the user control, whereby even up to 100 variables can be placed in as much as 6 menu levels.

For the Compri HX a software module is also available, the Compri HX module. When applying this module, it is also possible to configure a user menu in addition to the automatically generated installation control.

The required variables that are shown in the Touchscreen can be placed in the menu through the “drag and drop” method. After this the required button type is set for the variable in question and the texts can be adapted. It is even possible to draw up the available help texts specifically for a user. In addition, there is an option to include a log-in screen in the control. For this purpose it is possible to allocate up to three levels access rights with TC Select.



TC BACnet Router makes Top Control projects native BACnet

Version 6.0 fully supports the BACnet protocol within Priva installations. BACnet stands for Building Automation and Control Network and is an open communication protocol for building automation networks. BACnet meets the wish of building managers by offering an open standard with the option to integrate brand-independent components within one management system. Priva can offer BACnet solutions for new, as well as for current Top Control projects.



Your new installation equipped with BACnet

Applications for specifications already consider the wishes of clients regarding a control system in which different products can be applied that communicate through the BACnet protocol. For specifications in which BACnet is requested, Priva offers the possibility to make independent choices with regard to the control installation by including the TC BACnet Router. With the TC BACnet Router in combination with other Priva products a building management system is offered that meets all requirements that are stated in BACnet specifications.

Continuity in current Priva installations with BACnet

Apart from including the TC BACnet router in a new project, it is also easy to change a current Priva Top Control installation in a BACnet installation by adding the router. This is because the controllers act like a native BACnet towards the network through the router, defined as B-BC (BACnet Building Controller) within BACnet. The continuity and compatibility of current installations is therefore guaranteed in this way, without having to install a complete new control network.

When the TC BACnet Router is added to an existing project, the changes are generated automatically by means of TC Select. Therefore no extra engineering is required for data conversion and it offers the guarantee that all objects are also actually present. This work method also means that considerable time can be gained in the engineering process. Within TC Select it is also possible to add the TC BACnet Router in this way to installations with the previous generation of “Compri TC” controllers.

New type basic module Compri HX 80E

The TC BACnet Router makes use of a new basic module (Compri HX 80E) and includes specific router software. Although the router therefore does not contain any control software, it can still be included as a “normal” controller in the datanet. Outwardly the Compri HX 80E looks a lot like the Compri HX 8E. However, with the Compri HX 80E there is an entirely new type of basic module with an Ethernet connection of 100Mb/s, which is prepared for a second Ethernet connection.

Communication with other BACnet equipment

For the TC BACnet router a PICS (Protocol Implementation Conformance Statement) has been drawn up. The PICS contain, among other things, a description of the supporting objects and services. By comparing the services of a BACnet device, it is possible to establish whether two devices can communicate with the required functionality.

Other extensions in TC 6.0

XML within TC Servecenter

The Facility Management greatly wishes to receive messages and alarm from the control system through XML. In Priva Top Control 6.0 there is a possibility to immediately pass on alarm messages and messages through TC Servecenter via an XML file. This means that communications take place in a fast and open way in the project. With these XML messages it is possible for you to incorporate alarms and measurements in applications of third parties (for example, Planon).

Single reading licence for 32-bit value

It is often not clear yet in the offer phase whether the value of a variable to be read through a universal interface is 16 or 32 bits. With Top Control 6.0 this is less important in this stage, because only 1 TC value reading licence is necessary for both types of variables.

Renewed password protection

As from TC version 6.0 the login method with the pin code has been broadened and the user account may consist of a user name and a password of at most 10 characters. The password may consist of characters, numbers and punctuation marks.

The password functionality concerns both the Top Control applications and passwords on the controllers and can be applied in projects consisting of the Compri HX and Comforte CX. For current installations with a Compri TC the use of the pin code continues to be possible, so that a software upgrade to version 6.0 is also possible in these projects without having to change the hardware.



Support of Windows user rights

In older versions of Top Control it is necessary that a user has so-called “administrator” rights on his Workstation in order to make use of, for example, TC Vision. However, ICT managers want to protect these types of rights for users, because of the greater risks for protecting the PC as well as the network.

With Top Control 6.0 no “administrator” rights are necessary anymore in order to use the Top Control end user applications. As is common with other software applications, the installation of Top Control is only possible with “administrator” rights.

Apart from changing the Windows rights, the setup has been adjusted according to the tried-and-tested system of the Microsoft Installer (MSI) and the Priva programs are included in the Program Files directory from now instead of in the Directory root of the PC. By applying the MSI, it is possible to carry out an installation from the network, which means that the ICT management does not have to distribute any separate executable.

TC OPC Server can be applied even more broadly

TC OPC Server offers other applications such as facility management packages and access to the Priva Top Control installations, so that information can be exchanged in a standardised way. In order to increase the number of applications with which interfaces can be created TC OPC Server does not only support OPC version 1.0a DA, but also the more recent 2.0 DA and 3.0 DA versions of OPC.

At the same time the descriptions in the export list of data points have also been extended. For each OPC data point it is described in which building part, installation part and module the origin of the data point lies within the Top Control project. In addition, TC Select offers the possibility to include a reference code for all elements within the project. These are also represented in the data points export list. Since installation codes are used to mark installation components in drawings, software and in the actual installation, the reference code can be used to simply make all data points traceable. In combination with the macro functions of a spreadsheet program this makes it possible to quickly realise the required 'tag-coding'.

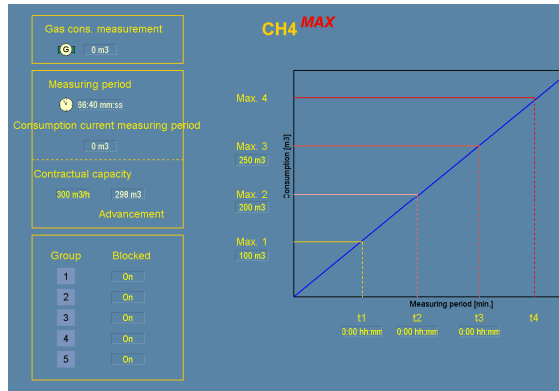
Last but not least, the program code has been optimised, so that the TC OPC Server is many times faster and more stable. With these extensions the TC OPC Server is very suitable for larger projects in which much information is exchanged.

Separate History database for third party interfaces

From Top Control 6.0 a separate database is available within TC History that is accessible for applications that are specifically intended to carry out analyses. The database offers different tables, which include diagrams and tables, logbook messages and setting changes.

Accounts can use the data freely through specific software for analysis purposes. An example of an application is the integration of TC History and the energy monitoring package Erbis, developed by Van Beek Ingenieurs from Arnhem.

Reduction of energy costs with Gas Peak Monitor



op Control 6.0 has a module for monitoring the gas peak for building managers who purchase much natural gas from the gas supplier. This makes it possible to block consumption groups when the agreed gas capacity is exceeded.

When they exceed the maximum capacity, building managers often get a fine or an increase in the contract capacity.

Due to the control module 'Peak Load Monitor Gas 5 consumers' the gas consumption is monitored and undesired peaks are levelled off.

New documentation Priva system

In cooperation with Priva Agro a complete new documentation system has been put into operation. This system makes it possible to generate manuals (PDF) and Help files (CHM and WebHelp) for Priva Building Intelligence as well as for Priva Agro. By using XML-techniques it is possible to place texts in a simple way in different publications. These are a number of features of the system:

- modular documentation set-up
- recycling (single-source) of information on several levels
- optimal translation support
- publishing many output types (Print, CHM, HTML, Web-help)

What do you notice about this as a reader? To start with: the contents. The Help files and the manuals have grown in volume, because certain chapters have been included in several places. This is handy when searching in Help: for example, you will also find data about modems and solving problems with modems in the Help files of TC Select. Furthermore, you will also notice the new design. The design of the Help files and manuals has changed. It is more consistent and of course in agreement with the new Priva company logo.

New components in Help:

- Making program operational
- Solving problems
- Program specifications

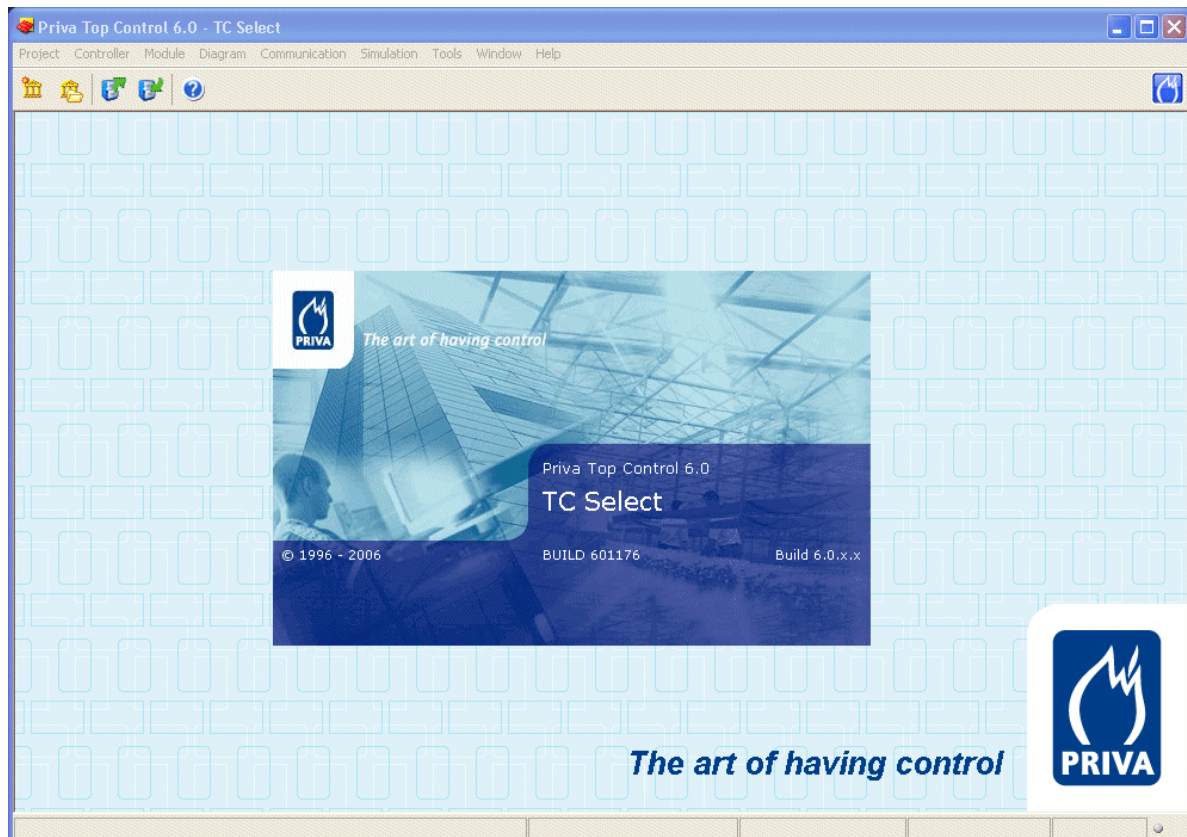
New component in the manuals:

- Making TC History operational (in Starting Manual with TC (Web)Vision)
- Manual Starting with TC ServeCenter



New design

In April 2006 Priva Building Intelligence moved from Delft to the new “Priva Campus” in De Lier. This created a better synergy between the different market groups of Priva Agro and Priva Building Intelligence that are active within Priva. This synergy can be found in our software products, for example, in the unambiguous Look & Feel. For example, the Splashscreen, with which Top Control starts up, has a new fresh representative quality.



Do you want to know more?

For more information about Top Control 6.0 we refer you to the extensive Help functions that will support you during the use. In addition, you will also see a comprehensive technical list of all references per version on our partner site that you find through the Priva website. For more information about the other Priva products, you can of course always contact our sales department.

Priva Building Intelligence Ltd
Bredon Road
TEWKESBURY
Gloucestershire GL20 5BX
United Kingdom
T +44 (0)16 84 29 30 81
F +44 (0)16 84 29 79 90
www.priva.co.uk

